

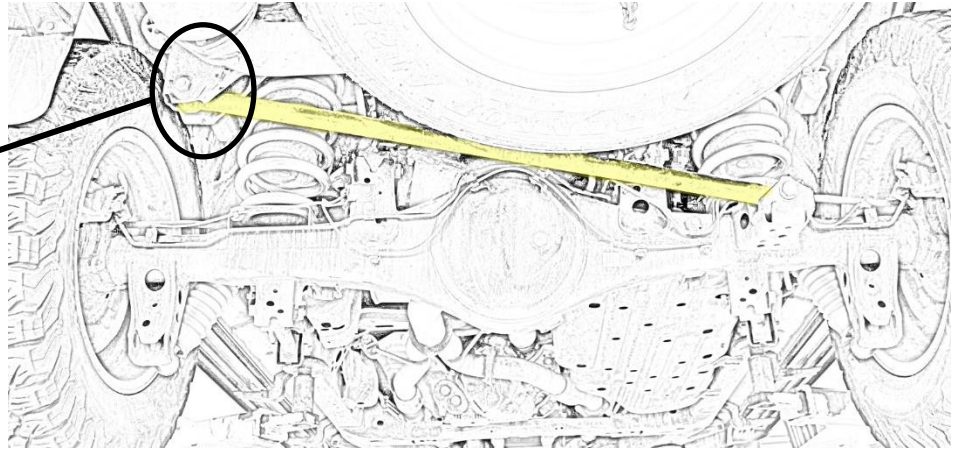
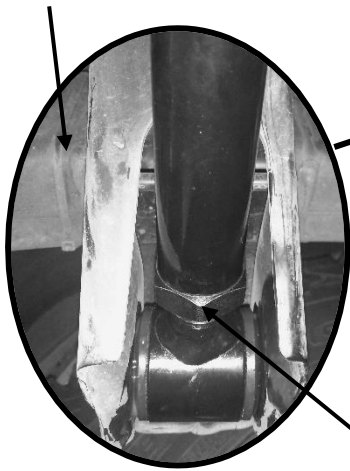
# Fitting Instructions #TRC1140IS

Toyota Landcruiser 200/300 series

Rear Adjustable Panhard Rod



Chassis Rail



IMPORTANT: Adjustable side (Rod End) of the Panhard rod **MUST** be installed on Chassis side.

**NOTE: These components must be fitted by qualified persons only, to factory specifications, as per factory service manual. Photos are indication and may vary slightly in appearance from actual product**

1. Raise vehicle by the chassis and support on hoist.
2. Support the rear diff with long adjustable stands/under hoist stands;
3. Remove the factory rear Panhard rod and clean the chassis area.
4. Apply the grease supplied on all bushing contact areas;
5. Install the new rear Panhard rod to the vehicle and adjust it to the desired length by turning the rod end. *Ensure to tighten the lock nut once the desired length is achieved.*

Note: Adjustable side (Rod End) of the Panhard rod **MUST** be installed on Chassis side.

6. Manufacture's torque setting must be used on all bolts.
7. Recheck all bolts after 1000km or 1 month;